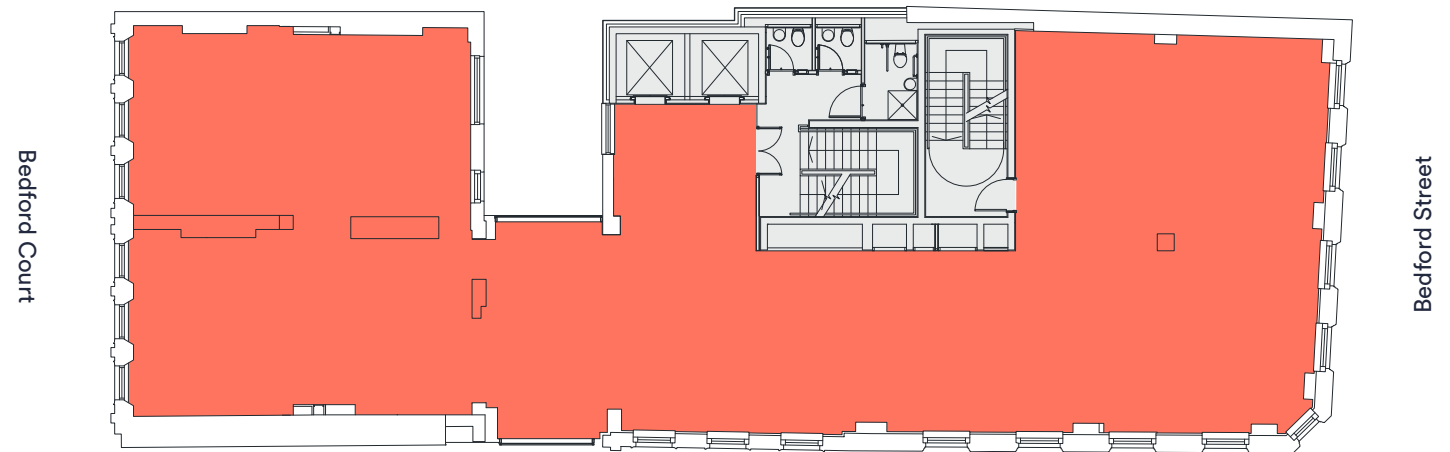


15 Bedford St.

Floor	Finish	Sq Ft	Sq M
5th	Plug & Play	1,586	147.3
4th	Plug & Play	3,327	309.1
3rd	CAT A	3,306	307.1
Total		8,219	763.6

3rd floor plan
3,306 sq ft



North



For indicative purposes only. Not to scale.

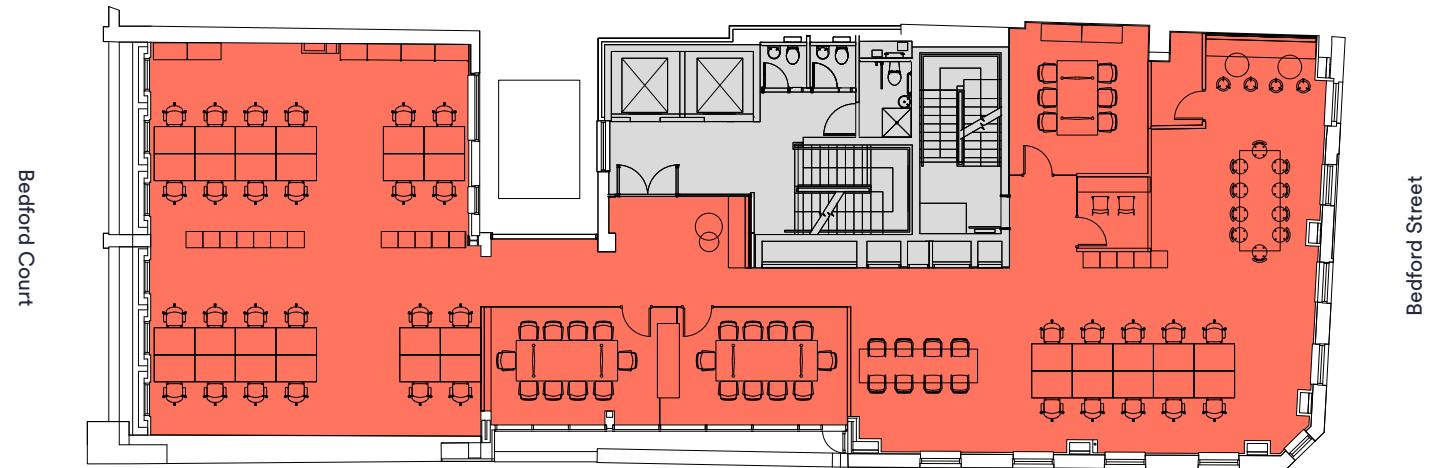
Floor space ■
Core ■

15 Bedford St.

4th floor plan

3,327 sq ft

Workstations	34
10 person meeting rooms	02
6 person meeting room	01
Breakout area	01
Teapoint	01
Hot desks	08
Zoom room	01



5th floor plan

1,586 sq ft

Workstations	16
8 person meeting room	01
Breakout area	01
Teapoint	01
Zoom rooms	02
Collaboration areas	01



North



For indicative purposes only. Not to scale.

Floor space ■
Core ■